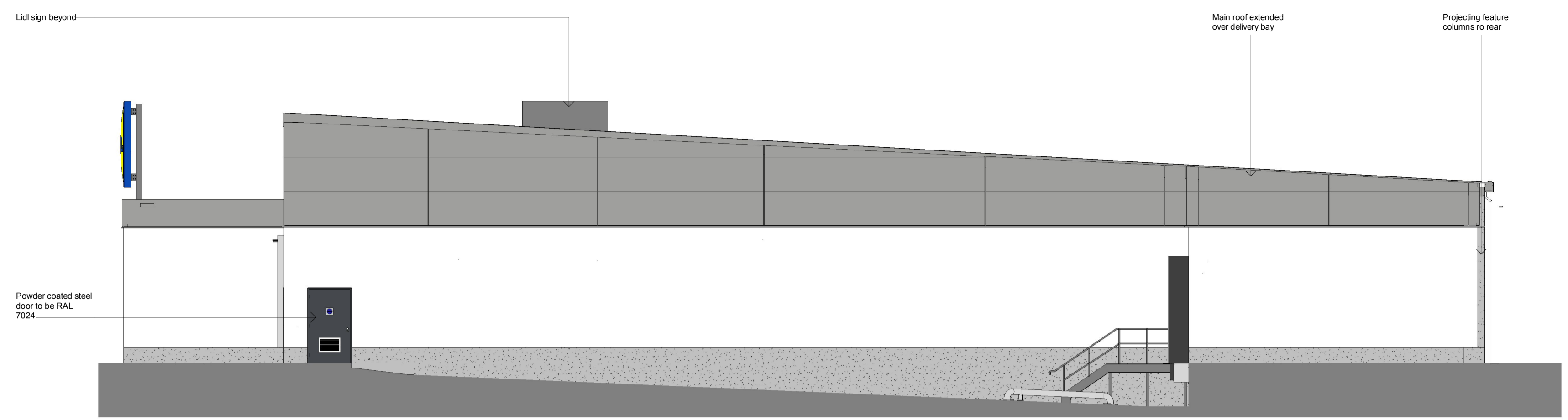
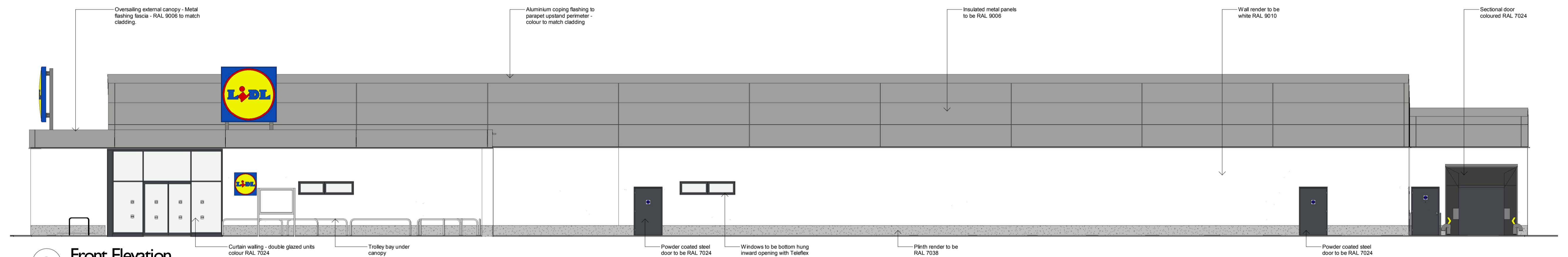


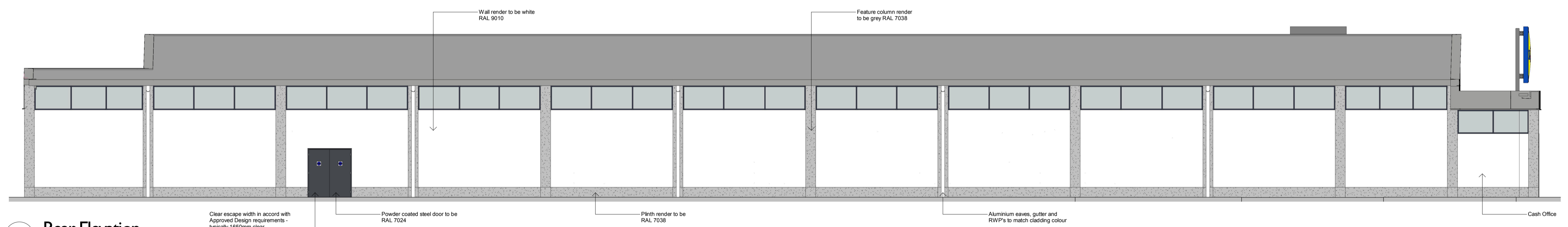
Rev.	Drawn	Checked	Date
1	SMS	KH	29.09.16
2	KS	KDH	20.09.18
3	KS	KDH	21.09.18
4	KDH	DWW	27.09.18
5	DWW	JG	15.10.18



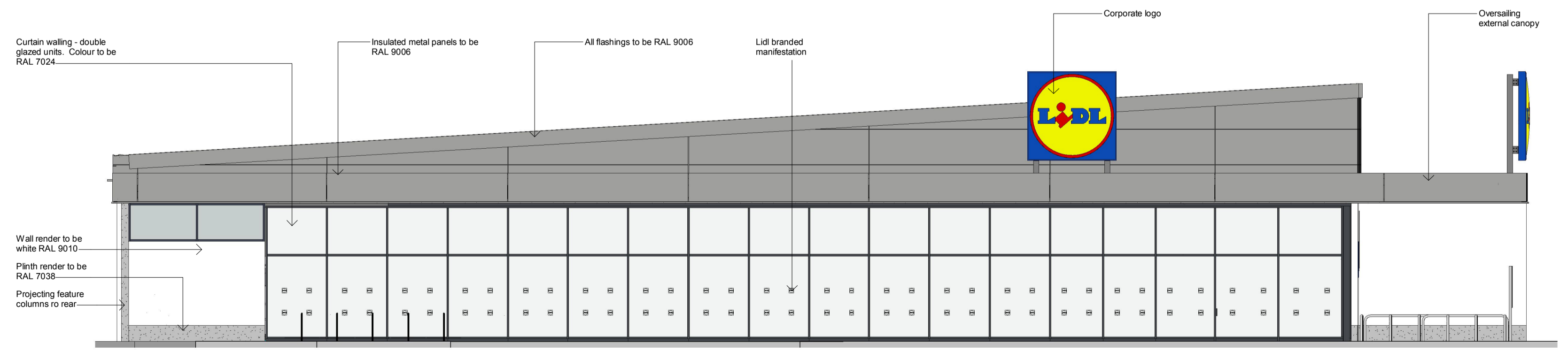
1 Side Elevation
1 : 100



2 Front Elevation
1 : 100



3 Rear Elevation
1 : 100



4 Glazed Gable Elevation
1 : 100

Status	Preliminary
Project	Lidl - Bridge Road, Stockton
Drawing	Proposed Elevations
Project No.	07137
Dwg. No.	A(90)GAE001
Rev.	5
Scale at A1	1 : 100
Drawn	SMS
Checked	KH

